

**GATES OPEN Friday, JULY 19<sup>th</sup> - 28<sup>th</sup>**  
Drive in daily or encamp with us

**25 South St. (Route 96) Douglas, MA**  
(Adjacent to Douglas State Forest  
Just 18 miles south of Worcester)

From Route 146 (Uxbridge, MA):  
Take exit for Rte 16 West.

Go through Douglas center. After the blinking  
yellow light, turn left onto Rte 96 (South St.).  
We are 1/2 mile down on the right.

From Route I-395 (Webster, MA):  
Take exit for Rte 16 East.

4 miles after entering Douglas, turn right at the  
blinking red light; then a quick left onto Rte.96

2nd entry is 26 S.W.Main St. Douglas

**All Are Welcome!**

No Registration except for Accommodations

We gather together  
10am daily in the DiningHall  
and each evening in the Tabernacle

**Camp Officers:**

David J. Blaney, President (860)836-0343  
Patricia Mercado, Secretary (860)840-6564  
Paul Cnossen, Treasurer. (860)882-8804

Email camp or Text to volunteer with us

[www.DouglasCampmeeting.com](http://www.DouglasCampmeeting.com)

DCMA1875@gmail.com

QR code to donate via:

**venmo**

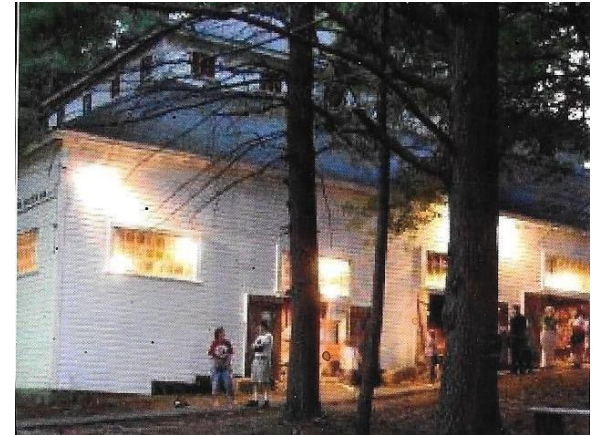


Douglas Camp Meeting Asso...  
@DCMA1875



Please mail correspondence to:  
Douglas Camp Meeting Association  
P. O. Box 503  
Douglas, MA 01516

# 149<sup>th</sup> Annual Douglas CampMeeting



**CROSS-DENOMINATIONAL  
CHRIST-CENTERED  
REVIVAL!**

**July 19<sup>th</sup> - 28<sup>th</sup>, 2024**

**Worshiping God in  
the splendor of His holiness**

Please visit us at:

[www.DouglasCampmeeting.com](http://www.DouglasCampmeeting.com)

Facebook: Douglas Camp Meeting

Next Year: July 18<sup>th</sup> - 27<sup>th</sup>, 2025 is our 150<sup>th</sup>!

The 149<sup>th</sup> Douglas Camp Meeting is  
July 19 - 28, 2024



Praise/Worship/Testimonies/Inspiration



Daily 10am Bible Studies (and VBS ages 4-12)



Gospel preaching 7pm weeknights 6pm weekends



No cost Family Activities daily



Serene, Sacred, Celestial

.....

Contact us to schedule/contract your church's  
Spring/Summer/Fall retreat on these  
hallowed grounds that have been set apart for  
seeking first Christ and His Kingdom.

George Holley's journey as a full-time evangelist began with a step of obedience and faith. God has repeatedly opened doors for 20+ years. George's last time of ministry at Douglas was both powerful and refreshing



**George believes, faith is not a leap in the dark, but a stepping in the light.**

**George shares the good news that Jesus Christ offers forgiveness, cleansing, and hope, along with the Biblical message of heart holiness to a contemporary society.**

(George will minister most services & Bible studies).

Other ministers: Pastor Alan Pangborn,  
Pastor Ed Perry, Pastor Mat Nordquist, ...



DCM welcomes The Foresters from Nashville for our first Sat.&Sunday. They are a family band in full time Gospel Music Ministry traveling all across the US & Canada each year. They play a large variety of instruments and their primary goal is to see souls come to know Jesus Christ as their personal savior.

There will be a wide array of worship leaders throughout encampment, including: "Rejoice & Sing", The Cashman's, Jonas & Becky Woods, Nancy Marshall, and more. View our schedule:

[douglascampmeeting.com/guide\\_to\\_2024\\_services](http://douglascampmeeting.com/guide_to_2024_services)

## CAMPMEETING SCHEDULE

**Services: Weekdays 7pm, Weekends 6pm**  
**Sundays at 10:30am & 6pm (Hymn-sing 10am)**

**Bible Study: Monday-Saturday 10am**  
**Community VBS** for ages 4-12 No Fee. 10-Noon

**Prayer Mtgs: 7:30am & prior to PM Services**

**Testimonies & Praise: Sundays 2:00pm**

**Families:**

**crafts, games, service project 8:45-9:45am daily**

**No cost daily activities** Each Afternoon: bike hikes, swimming, gaga ball, bball, water games

**Family afterglows** Every Late-Evening:

Campfires, Christian movies, Variety show,...

**CampMtg Craft Classes daily 1-3pm No Fee**

**Quiet Hour for Parents 3-4pm** daily by sign-up

**Children's Church during Evening Services.**

**'Celebrate Recovery'** Open group. Time: TBD.

.....

For **accommodation** arrangements contact:

Patricia (860) 840-6564 [DCMA1875@gmail.com](mailto:DCMA1875@gmail.com)

Tent campsite rental \$10/night, \$75/ten nights

Basic Camper/RV sites\* \$15/night, \$120/ten nights

Full-Utility w/septic RV sites \$30/night, \$240/ten nights

Cabin rental\* \$20/night, \$135/nine nights

3 Room Cottages\*, Dorm Rooms\*, Bunks,...

(\*A/C electricity usage fee \$5/day-night)

Parents are responsible for their families at all times.

Recreational activities close 10 minutes prior to services.

Modest apparel & behavior that honors the Lord is appropriate

Please limit public use of cellphones; we urge no use by youth.

**Fellowship Meals after evening services**  
**purchase burgers, hotdogs, fries, ice cream,...**

**Affordable breakfast/lunch/supper or bring your food/cooler ...enjoy our picnic area.**

Prices & Times posted at [DouglasCampmeeting.com/meals](http://DouglasCampmeeting.com/meals)

